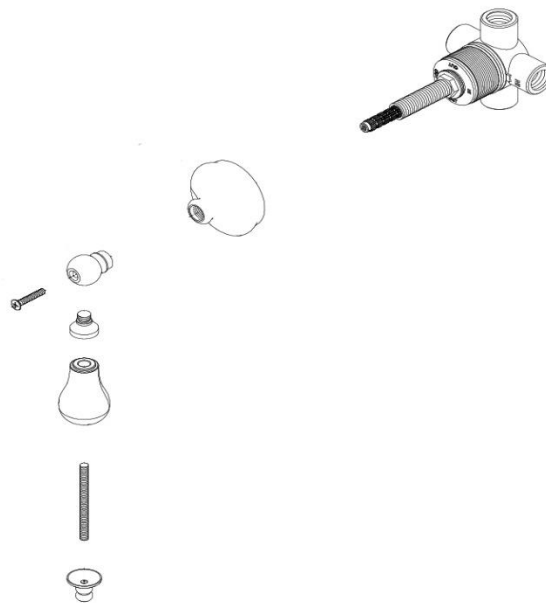


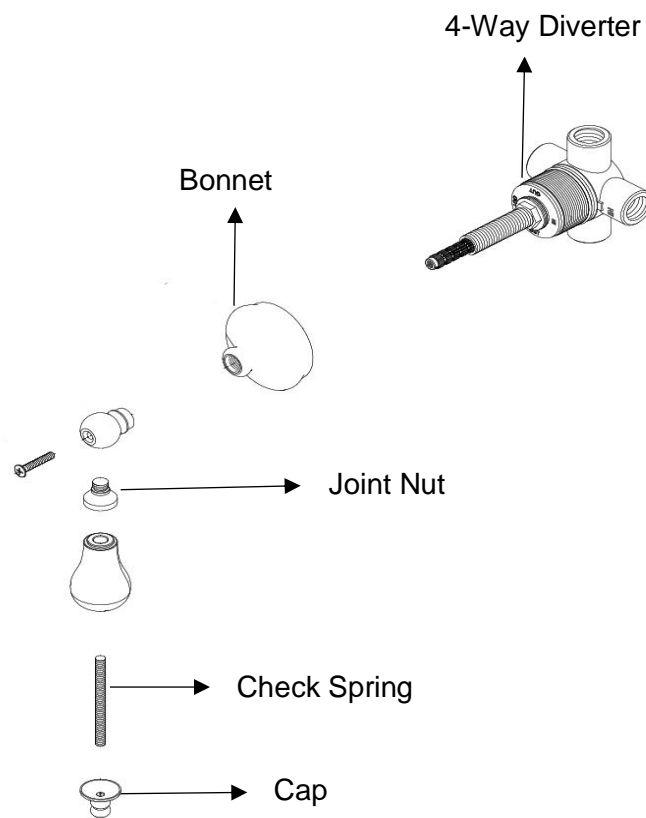
**Strom Living Sacramento Shower Control Valve with Diverter and Solid Brass****GUARANTEE & AFTERCARE**

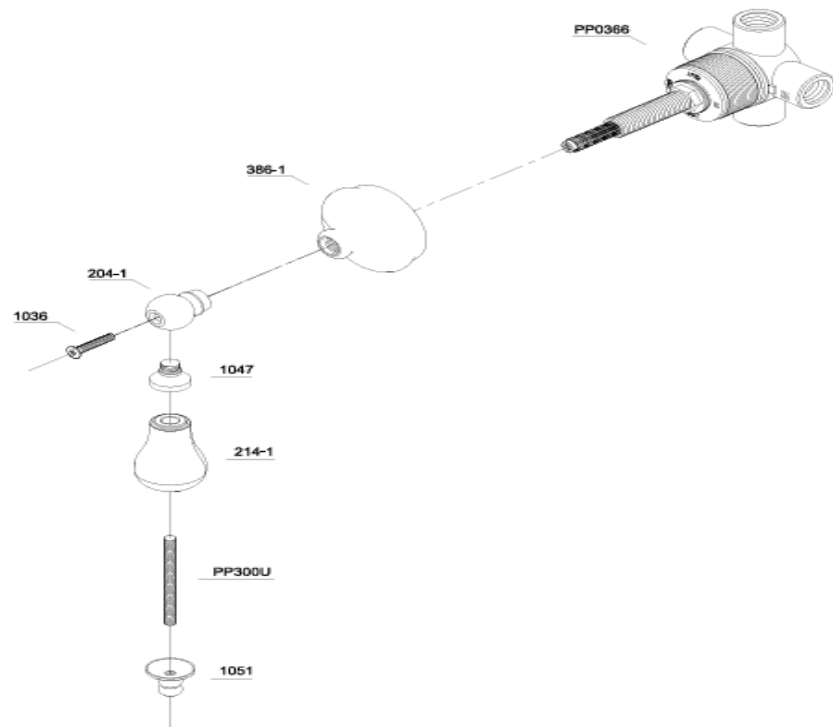
When installing or using tools, take care to avoid damaging the finish or fitting. Clean regularly with a soft damp cloth only to maintain appearance; avoid abrasive cleaners or detergents as they may cause surface damage. The company guarantees against faulty materials or manufacturing, excluding serviceable parts, if installed, cared for, and used according to our instructions.

**WATER SUPPLY REGULATIONS**

This product has been manufactured to comply with the relevant standards and conform to Water Supply Regulations.

COMPONENTS LIST





BILL OF MATERIAL				
ITEM	PT/ASSY	DESCRIPTION	TYPE	QTY
1	PP0366	4-Way Diverter	ASSEMBLY	1
2	386-1	Bonnet	ASSEMBLY	1
3	204-1	Handle Joint	ASSEMBLY	1
4	1051	Cap	ASSEMBLY	1
5	1036	Handle Screw	ASSEMBLY	1
6	1047	Joint Nut	ASSEMBLY	1
7	PP300U	Check Spring	ASSEMBLY	1