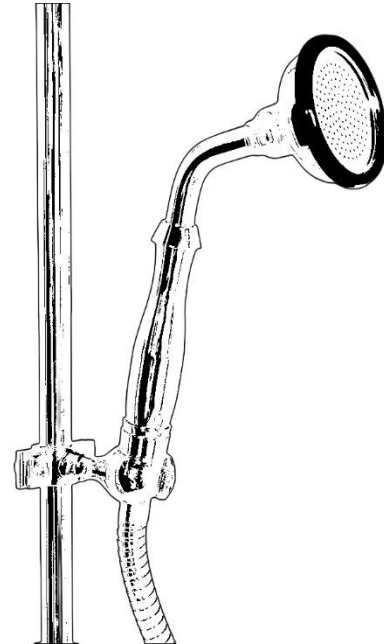
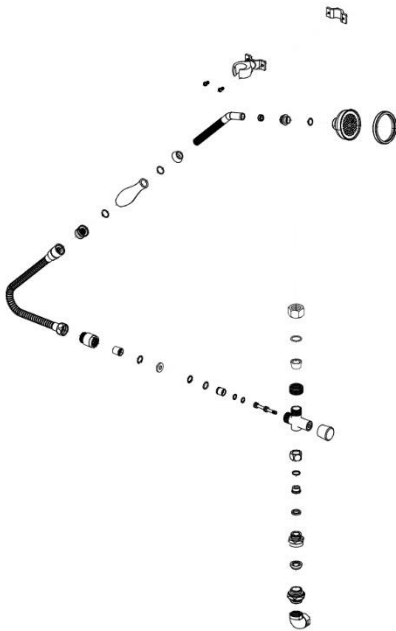


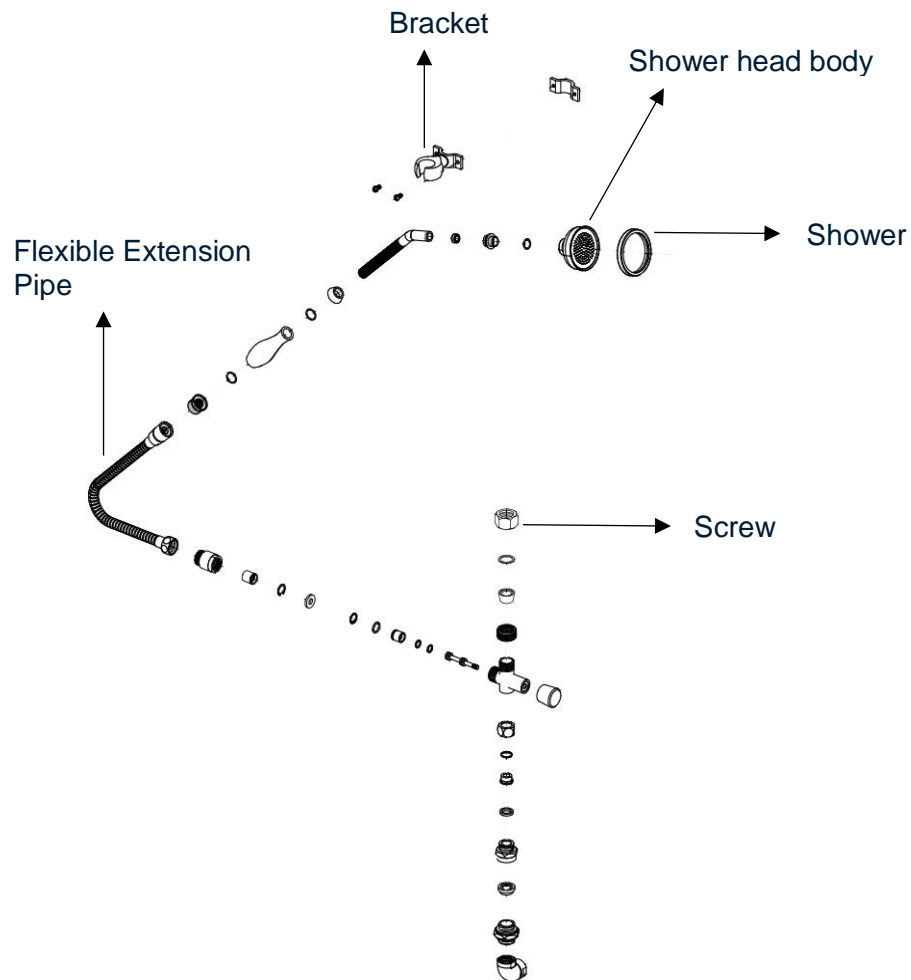
Strom Living Handheld Conversion Kit with Vacuum Breaker, Riser Bracket and Diverter Kit**GUARANTEE & AFTERCARE**

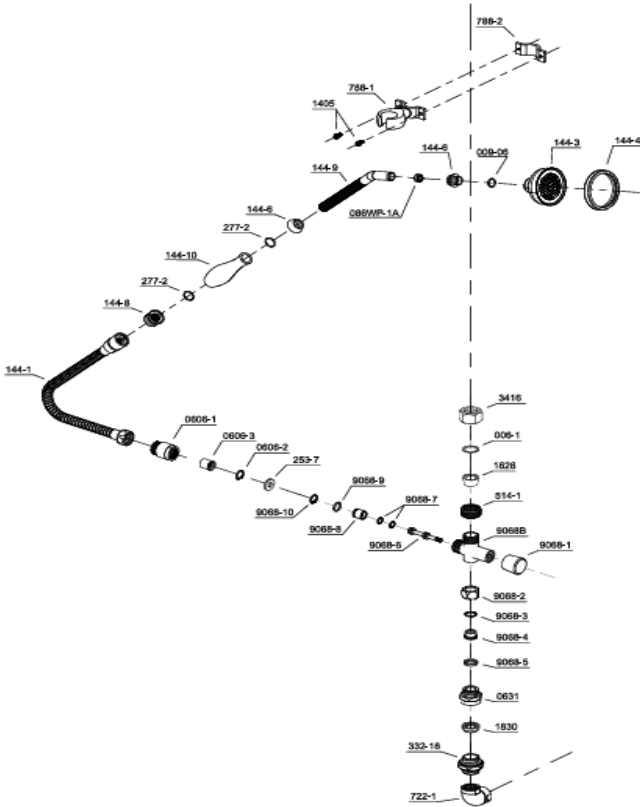
When installing or using tools, take care to avoid damaging the finish or fitting. Clean regularly with a soft damp cloth only to maintain appearance; avoid abrasive cleaners or detergents as they may cause surface damage. The company guarantees against faulty materials or manufacturing, excluding serviceable parts, if installed, cared for, and used according to our instructions.

WATER SUPPLY REGULATIONS

This product has been manufactured to comply with the relevant standards and conform to Water Supply Regulations.

COMPONENTS LIST





BILL OF MATERIAL				
ITEM	PT/ASSY	DESCRIPTION	TYPE	QTY
1	9068B	Body	ASSEMBLY	1
2	9068-9	Washer	ASSEMBLY	1
3	009-06	O-ring	ASSEMBLY	1
4	788-1	Bracket	ASSEMBLY	1
5	144-10	Bath Handle	ASSEMBLY	1
6	144-3	Shower head body	ASSEMBLY	1
7	144-4	Shower Cap	ASSEMBLY	1
8	144-1	Flexible Extension Pipe	ASSEMBLY	1
9	144-9	Overflow Tube	ASSEMBLY	1
10	3416	Screw	ASSEMBLY	1