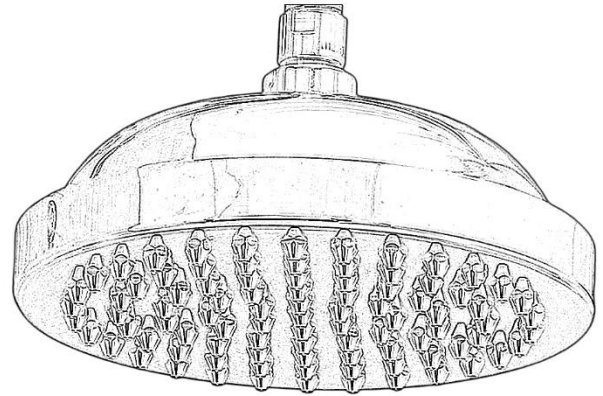


## Strom Living Shower Head 8" diameter

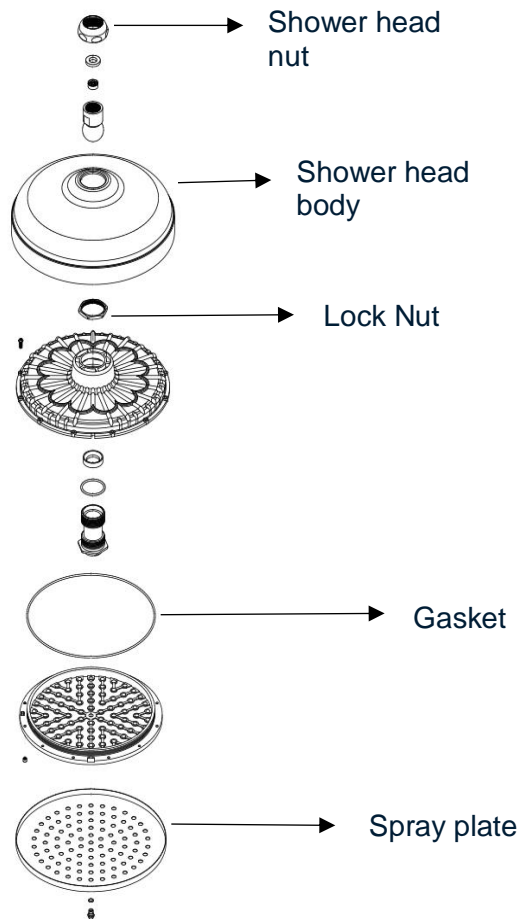


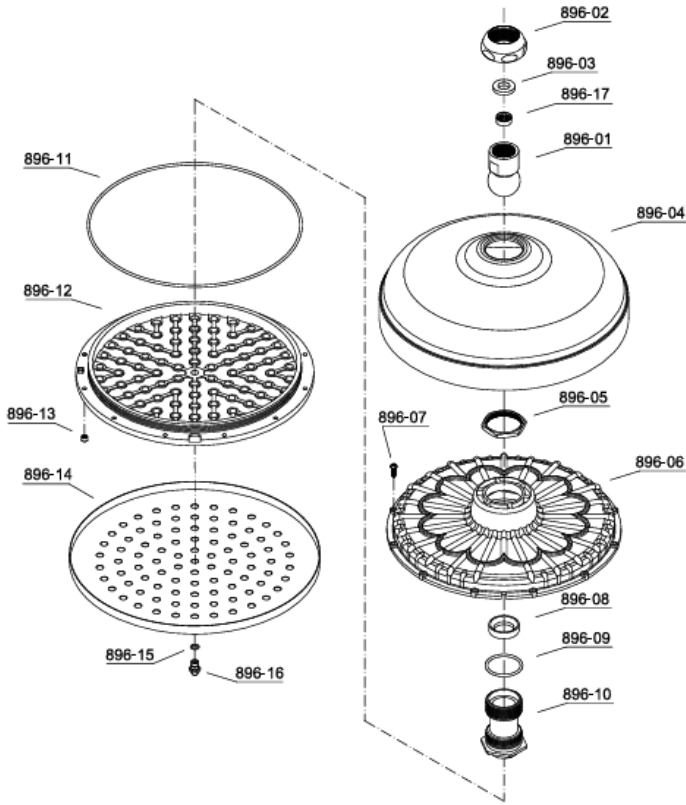
## GUARANTEE & AFTERCARE

When installing or using tools, take care to avoid damaging the finish or fitting. Clean regularly with a soft damp cloth only to maintain appearance; avoid abrasive cleaners or detergents as they may cause surface damage. The company guarantees against faulty materials or manufacturing, excluding serviceable parts, if installed, cared for, and used according to our instructions.

## WATER SUPPLY REGULATIONS

This product has been manufactured to comply with the relevant standards and conform to Water Supply Regulations.

**COMPONENTS LIST**



BILL OF MATERIAL				
ITEM	PT/ASSY	DESCRIPTION	TYPE	QTY
1	896-02	Shower head nut	ASSEMBLY	1
2	896-09	Washer	ASSEMBLY	1
3	896-03	O-ring	ASSEMBLY	1
4	896-05	Lock Nut	ASSEMBLY	1
5	896-01	Ball joint nut	ASSEMBLY	1
6	896-04	Shower head body	ASSEMBLY	1
7	896-11	Gasket	ASSEMBLY	1
8	896-14	Spray plate	ASSEMBLY	1
9	896-12	Spray Disc	ASSEMBLY	1
10	896-17	Sieve	ASSEMBLY	1