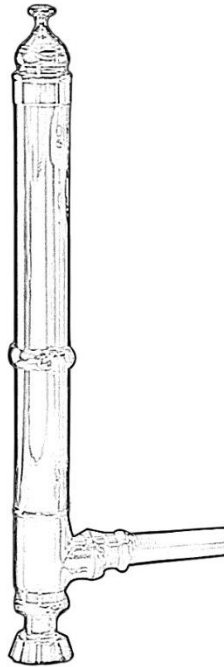


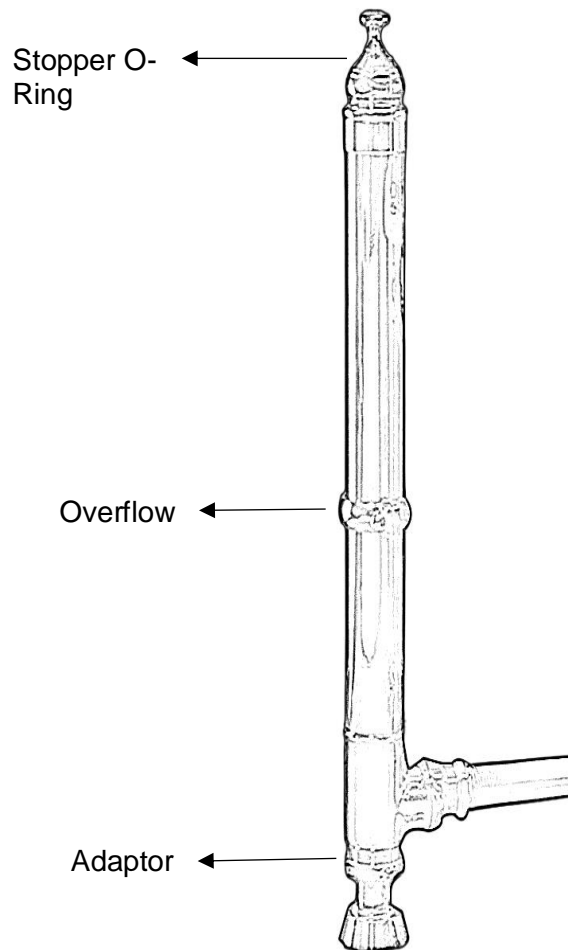
**Strom Living 26.5" Tower Drain with Waste Tube and Drain Strainer/IPS connections****GUARANTEE & AFTERCARE**

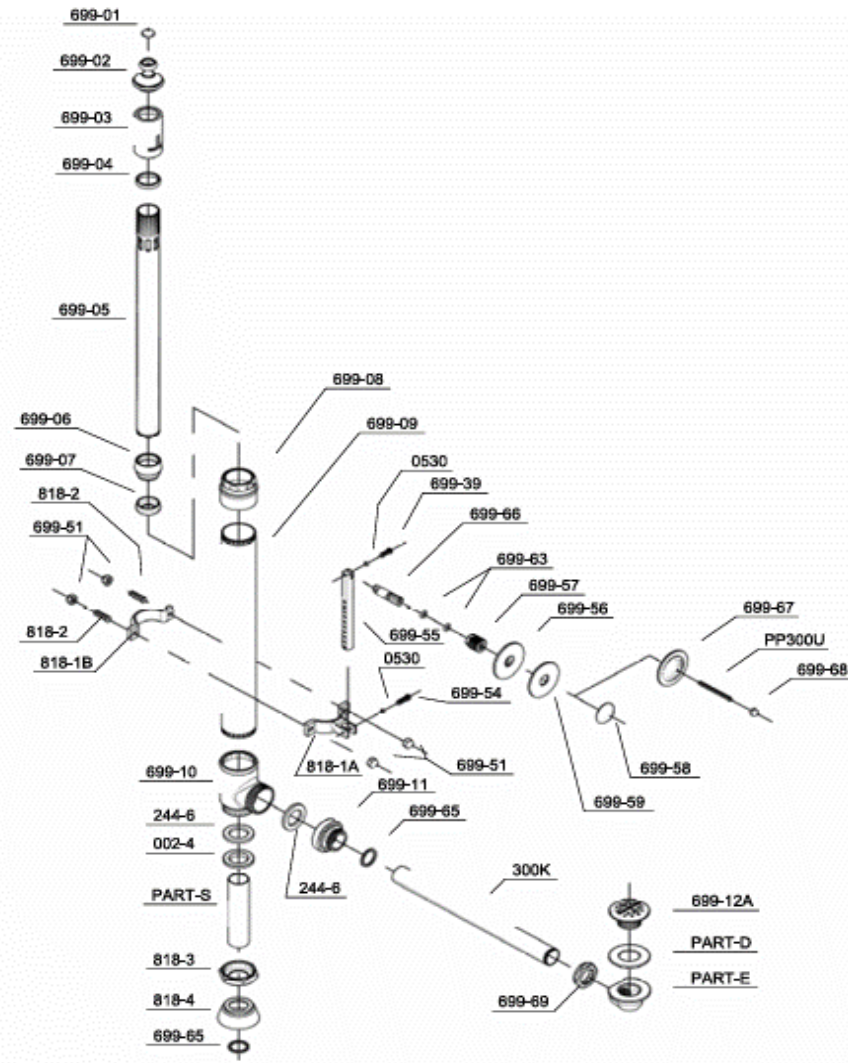
When installing or using tools, take care to avoid damaging the finish or fitting. Clean regularly with a soft damp cloth only to maintain appearance; avoid abrasive cleaners or detergents as they may cause surface damage. The company guarantees against faulty materials or manufacturing, excluding serviceable parts, if installed, cared for, and used according to our instructions.

**WATER SUPPLY REGULATIONS**

This product has been manufactured to comply with the relevant standards and conform to Water Supply Regulations.

COMPONENTS LIST





BILL OF MATERIAL				
ITEM	PT/ASSY	DESCRIPTION	TYPE	QTY
1	699-12A	Face Strainer	ASSEMBLY	1
2	699-02	Stopper O-Ring	ASSEMBLY	1
3	699-06	Overflow Tube	ASSEMBLY	1
4	818-1	Overflow Retaining Clip	ASSEMBLY	2
5	002-4	Nut	ASSEMBLY	1
6	818-3	Adaptor	ASSEMBLY	1
7	300K	Horizontal Rod	ASSEMBLY	1
8	699-69	Lock Nut	ASSEMBLY	1
9	244-6	Rubber Washer	ASSEMBLY	1