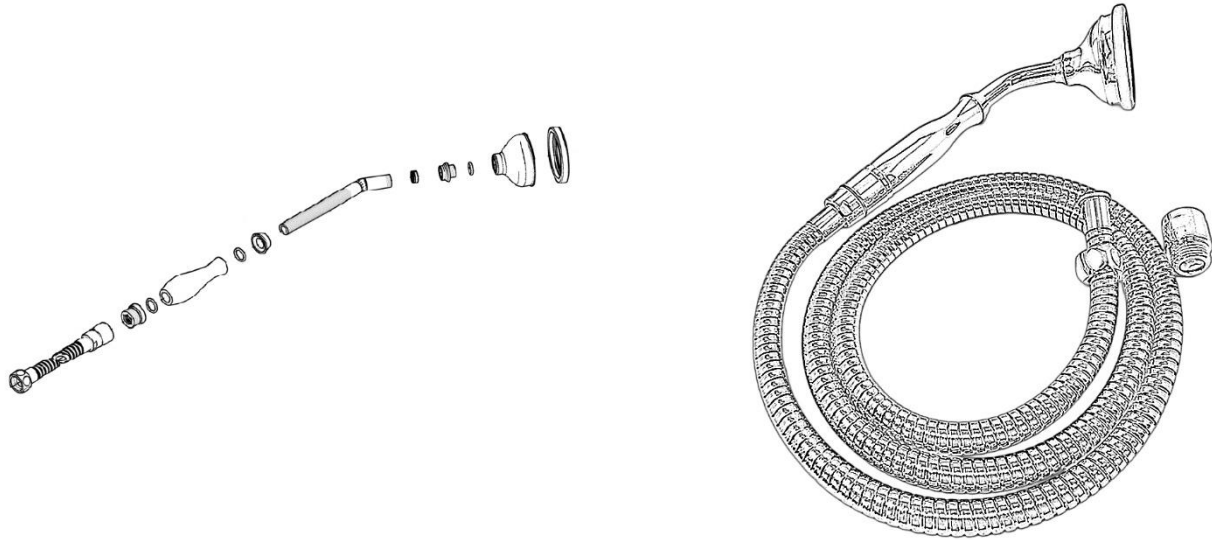


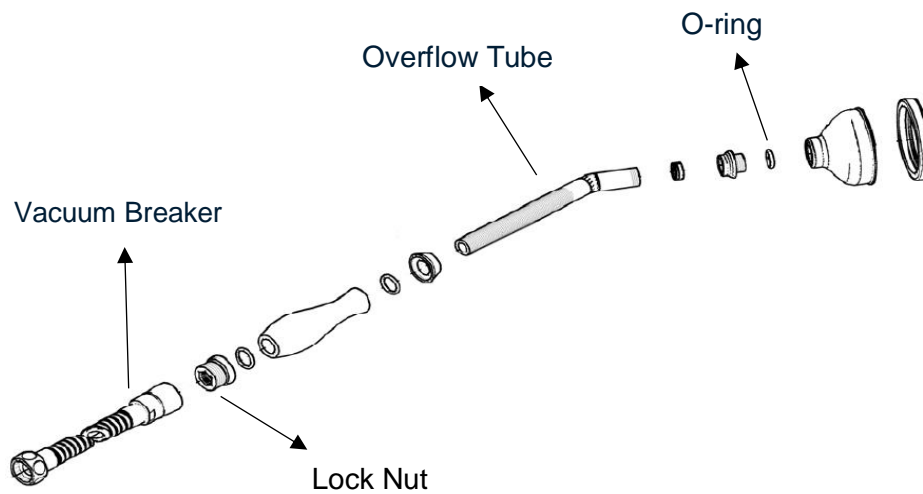
**Strom Living All-Metal Handheld Shower with Hose and Vacuum Breaker****GUARANTEE & AFTERCARE**

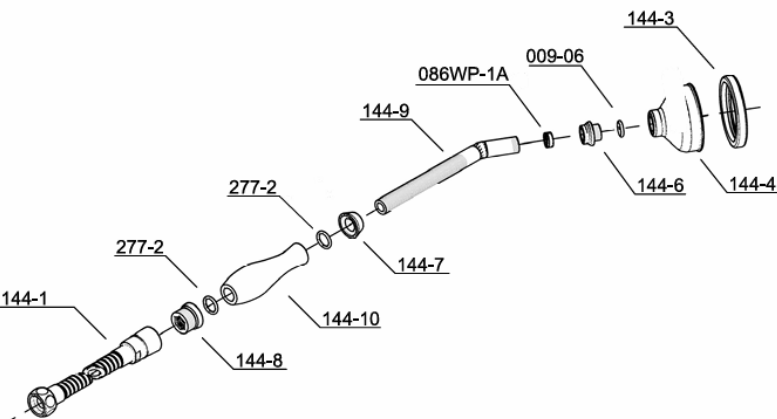
When installing or using tools, take care to avoid damaging the finish or fitting. Clean regularly with a soft damp cloth only to maintain appearance; avoid abrasive cleaners or detergents as they may cause surface damage. The company guarantees against faulty materials or manufacturing, excluding serviceable parts, if installed, cared for, and used according to our instructions.

**WATER SUPPLY REGULATIONS**

This product has been manufactured to comply with the relevant standards and conform to Water Supply Regulations.

COMPONENTS LIST





BILL OF MATERIAL				
ITEM	PT/ASSY	DESCRIPTION	TYPE	QTY
1	009-06	O-ring	ASSEMBLY	1
2	227-2	Washer	ASSEMBLY	1
3	144-4	Shower head body	ASSEMBLY	1
4	144-3	Shower Cap	ASSEMBLY	1
5	144-9	Overflow Tube	ASSEMBLY	1
6	144-1	Vacuum Breaker	ASSEMBLY	1
7	144-10	Shower Handle	ASSEMBLY	1
8	144-8	Lock Nut	ASSEMBLY	1