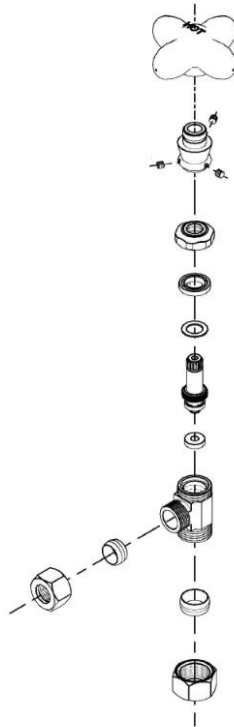


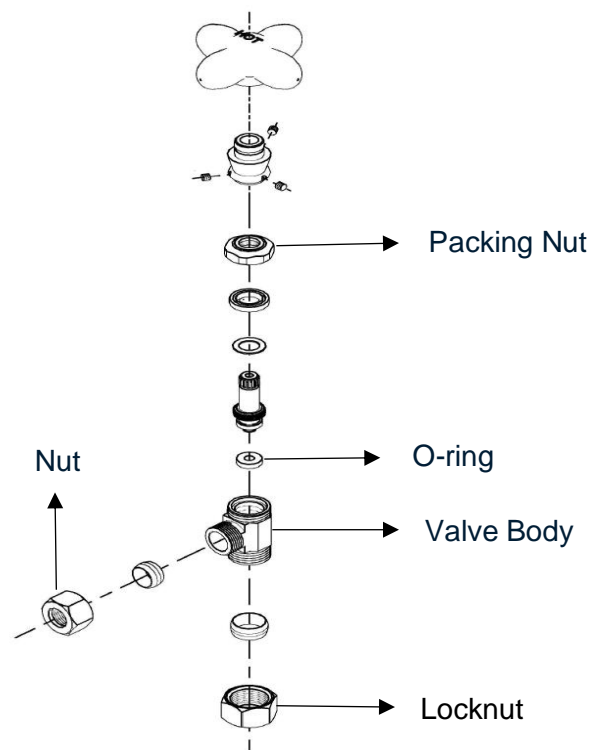
**Strom Living Angle Stop with 1/2" Compression****GUARANTEE & AFTERCARE**

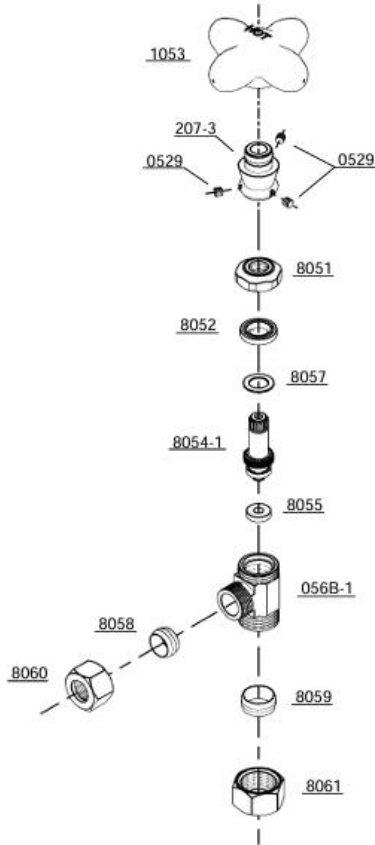
When installing or using tools, take care to avoid damaging the finish or fitting. Clean regularly with a soft damp cloth only to maintain appearance; avoid abrasive cleaners or detergents as they may cause surface damage. The company guarantees against faulty materials or manufacturing, excluding serviceable parts, if installed, cared for, and used according to our instructions.

**WATER SUPPLY REGULATIONS**

This product has been manufactured to comply with the relevant standards and conform to Water Supply Regulations.

COMPONENTS LIST





BILL OF MATERIAL				
ITEM	PT/ASSY	DESCRIPTION	TYPE	QTY
1	8061	Locknut	ASSEMBLY	1
2	2328	Cross Handle	ASSEMBLY	1
3	8051	Packing Nut	ASSEMBLY	1
4	8052	Bonnet	ASSEMBLY	1
5	056B-1	Valve Body	ASSEMBLY	1
6	8060	Nut	ASSEMBLY	1
7	8057	Washer	ASSEMBLY	1
8	8055	O-ring	ASSEMBLY	1
9	0529	Screw	ASSEMBLY	3

